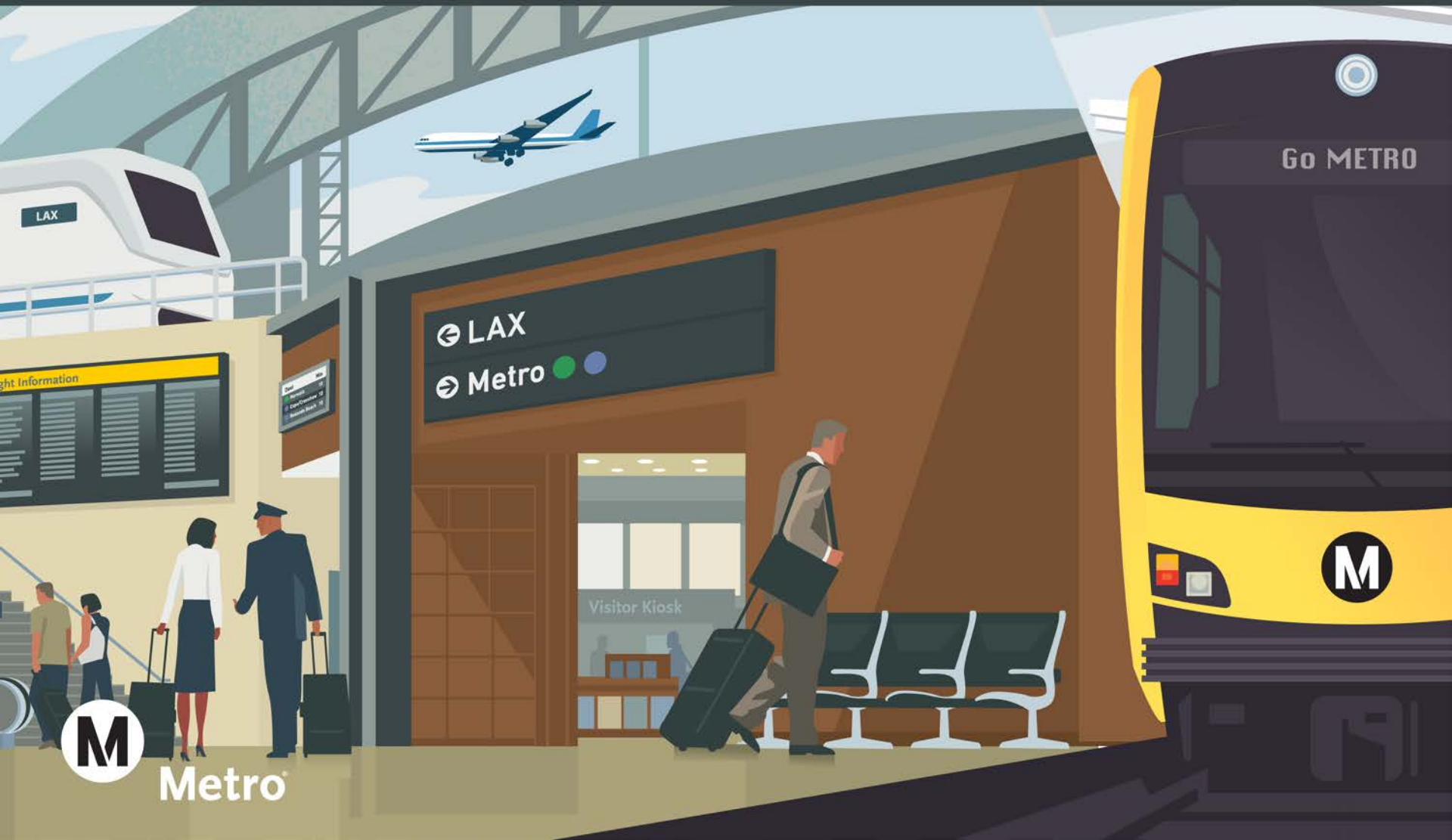


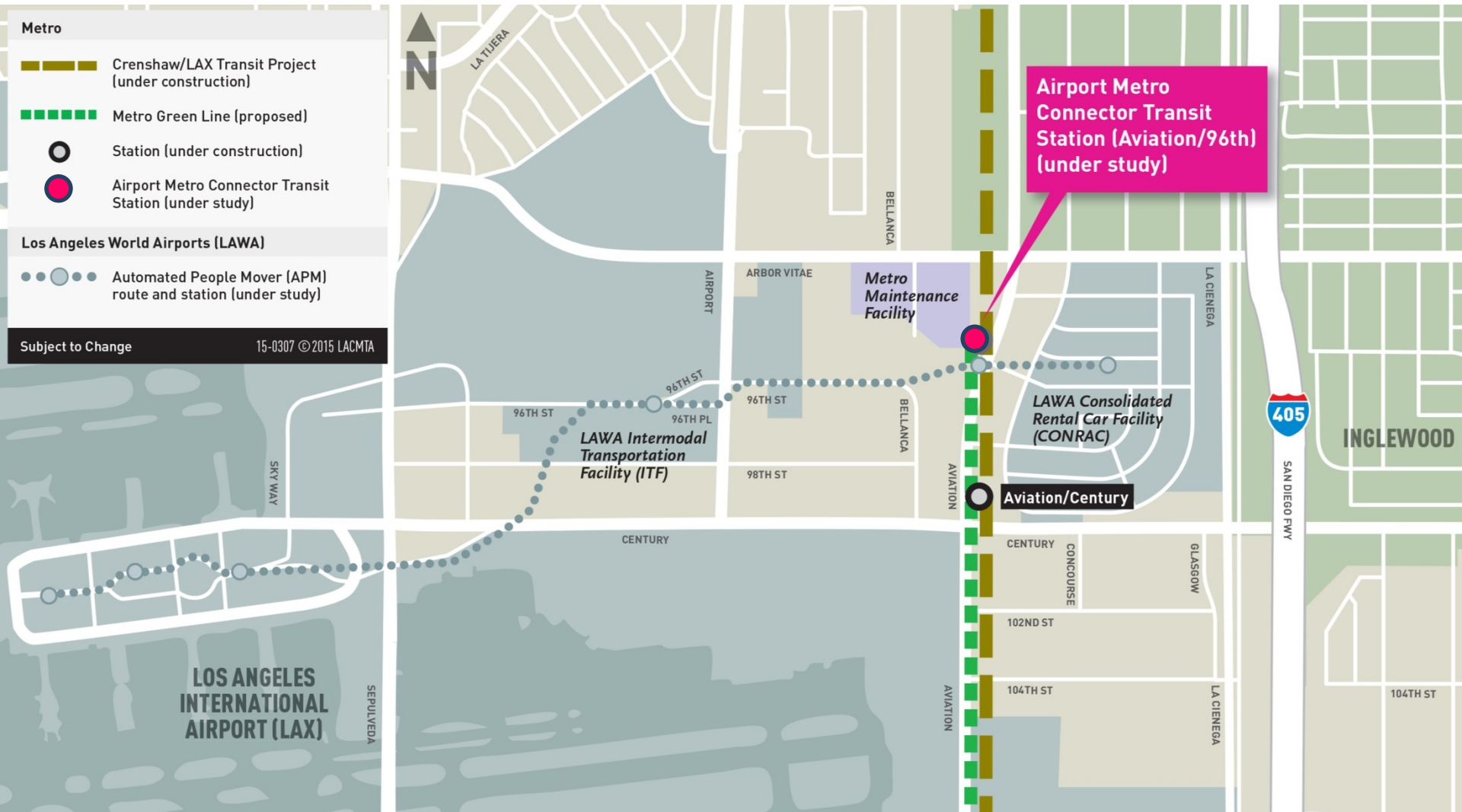
# Airport Metro Connector

## 96th Street Transit Station



Metro

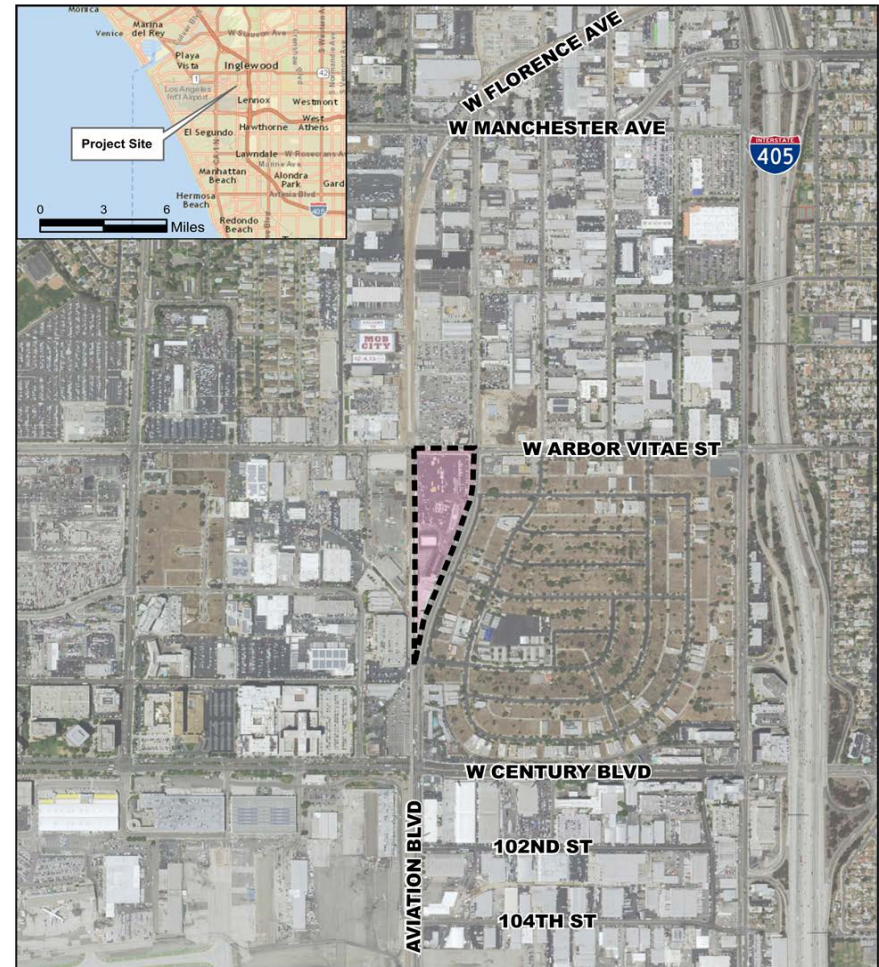
# AMC 96<sup>th</sup> Street Transit Station Project Area



# Environmental Impact Report (EIR)

## Project Components

- > Three at-grade Light Rail Transit Platforms served by Crenshaw/LAX and service extension of Green Line
- > Bus plaza
- > Bicycle hub
- > Pedestrian plaza(s)
- > Passenger pick-up/drop-off area
- > Transit center/Terminal building (“Metro Hub”)

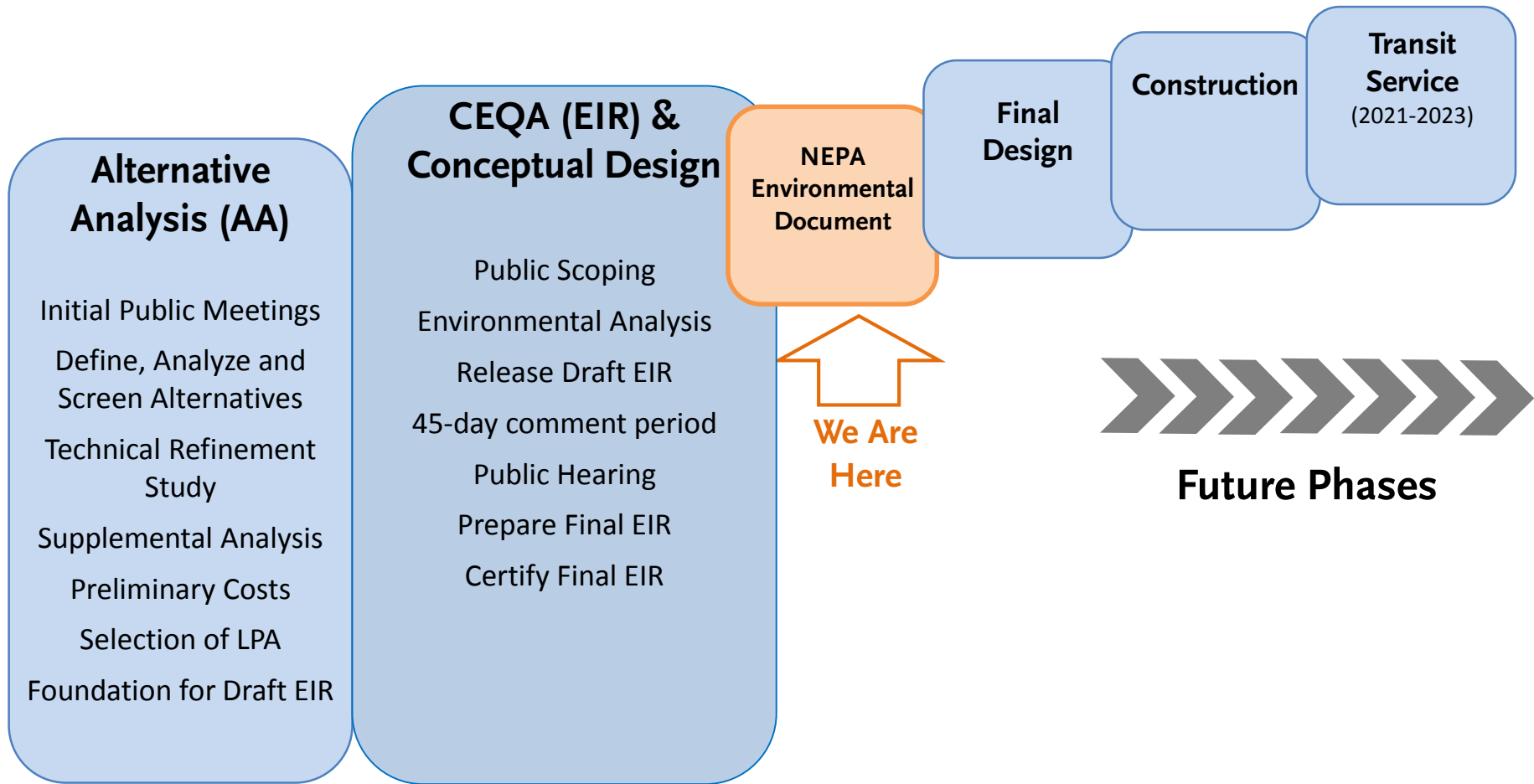


LEGEND  
Project Site

Approximate Scale  
0 1,000 2,000 Feet

\* *APM is being cleared by LAWA*

# Phases of Project Development

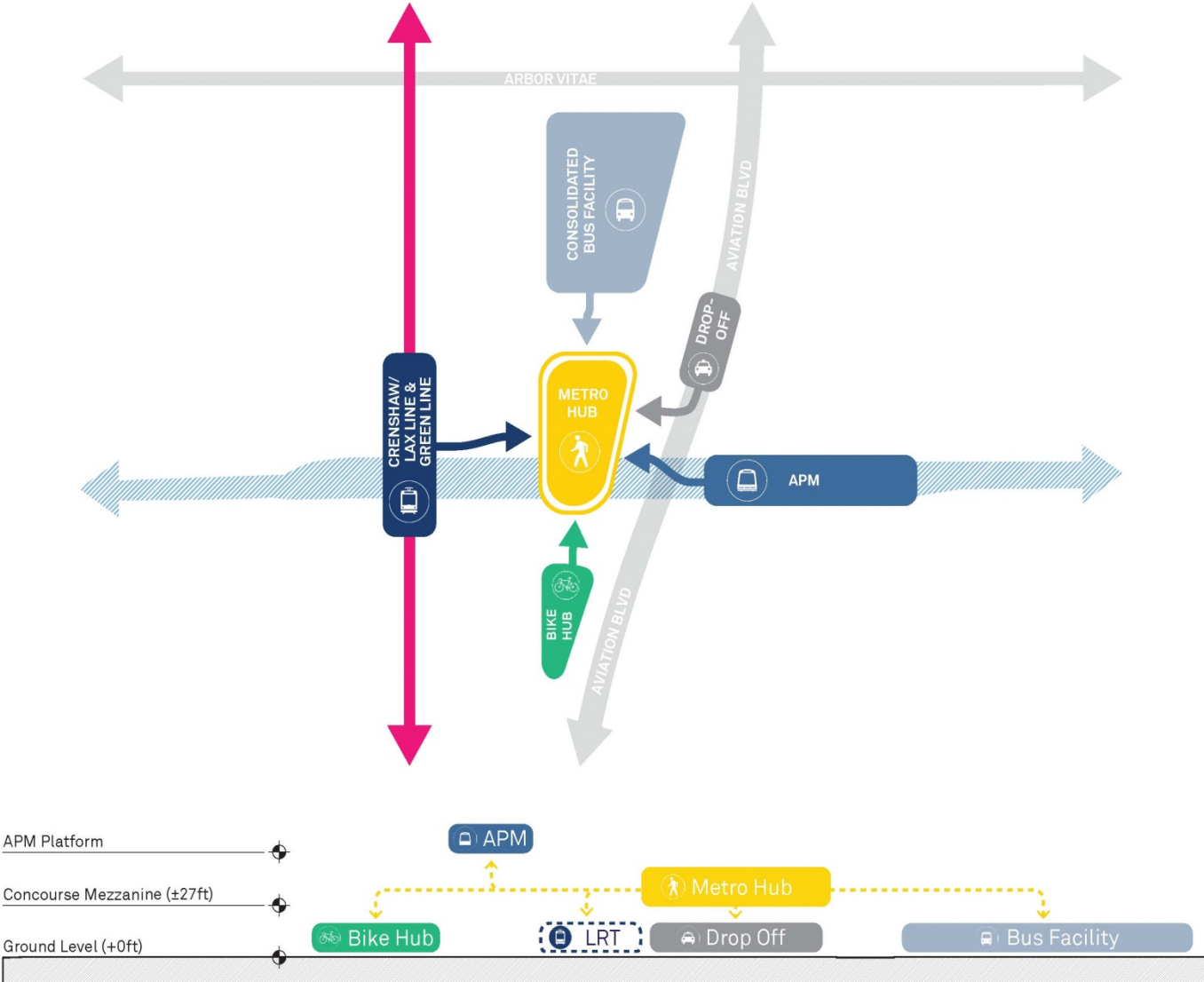




# Summary of Daily Ridership Forecasts

	Metro/Municipal Bus Boardings	Metro Rail Boardings	LAWA APM Boardings
Project (2035)	16,400	3,400	26,100

# Programmatic Components



# Aerial with Programmatic Components



BIKE HUB



CRENSHAW/ LAX  
LINE & GREEN LINE



BUS PLAZA



SITE SUPPORT  
FUNCTIONS

APM  
(BY LAWA)



METRO HUB  
& VEHICULAR  
DROP OFF



SITE PERIMETER  
LANDSCAPE BERMS

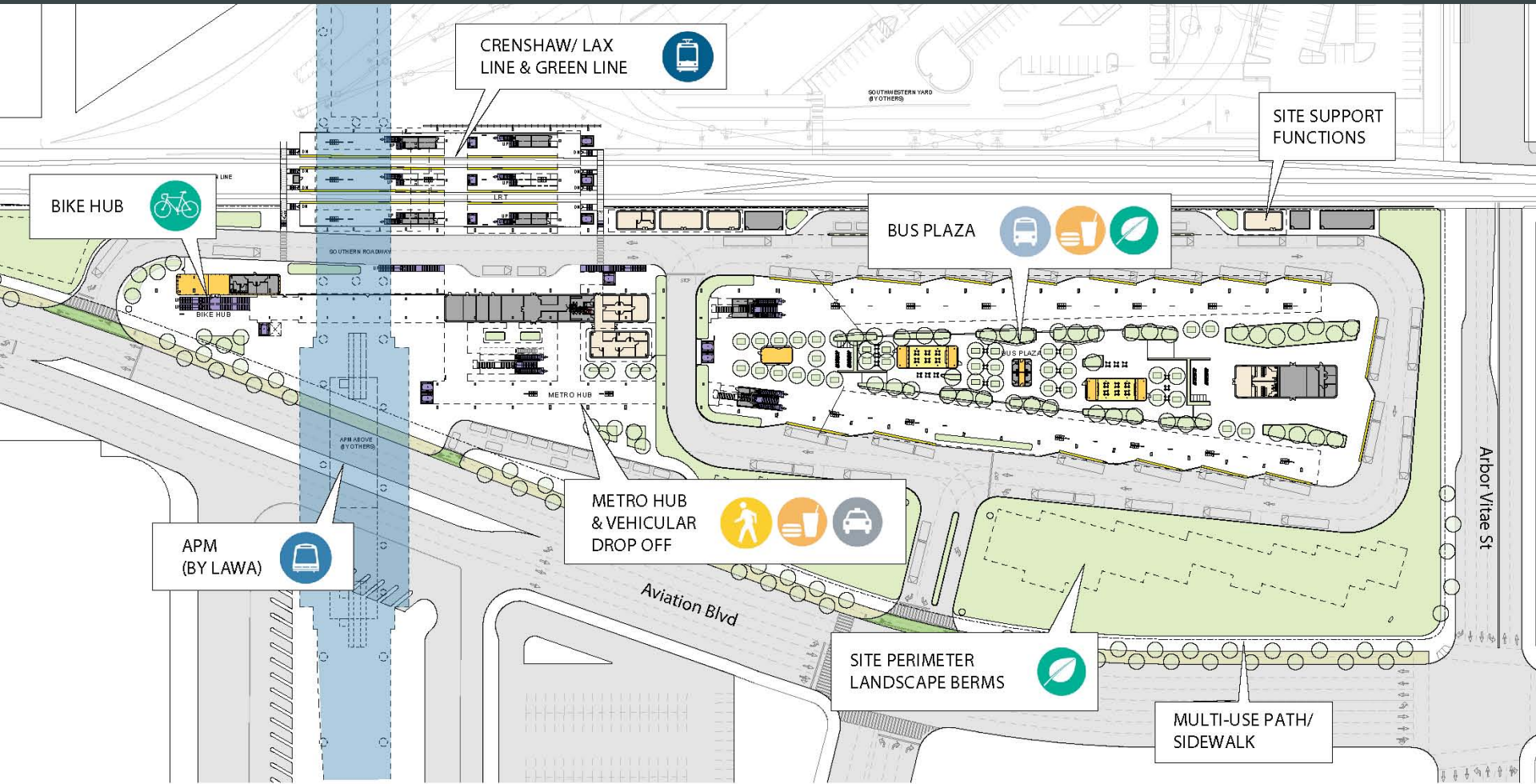


MULTI-USE PATH/  
SIDEWALK

Arbor Vitae St

Aviation Blvd

# Ground Floor Plan



Passenger Amenities (Enclosed)

Station Staff Areas

Vertical Circulation

Multi-use Path (Proposed)

0' 50' 125' 250'

Passenger Waiting Areas (Enclosed)

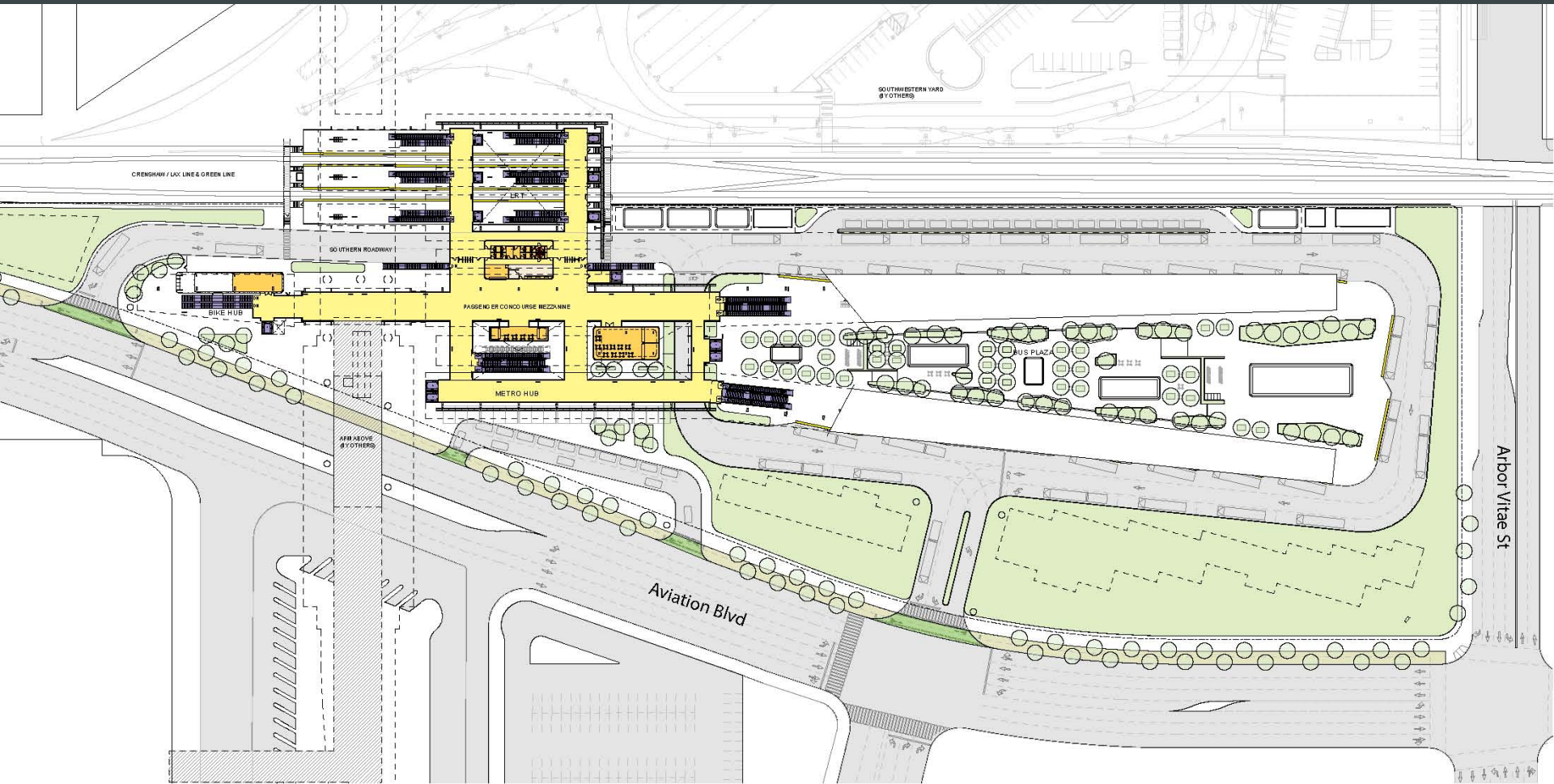
Station Support Areas

Planters / Vegetation / Site Perimeter Landscape

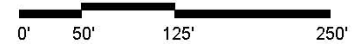




# Concourse Mezzanine Floor Plan



- |   |   |  |   |
|---|---|--|---|
|  Passenger Amenities (Enclosed)     |  Station Staff Areas   |  Vertical Circulation                             |  Multi-use Path (Proposed) |
|  Passenger Waiting Areas (Enclosed) |  Station Support Areas |  Planters / Vegetation / Site Perimeter Landscape |  APM Mezzanine (by LAWA)   |



# Metro Hub

View from Aviation Blvd looking Southwest



# Vehicular Pick Up/Drop Off Area



# Metro Hub: Ground Level Plaza



# Metro Hub: Mezzanine Level

Looking Northwest

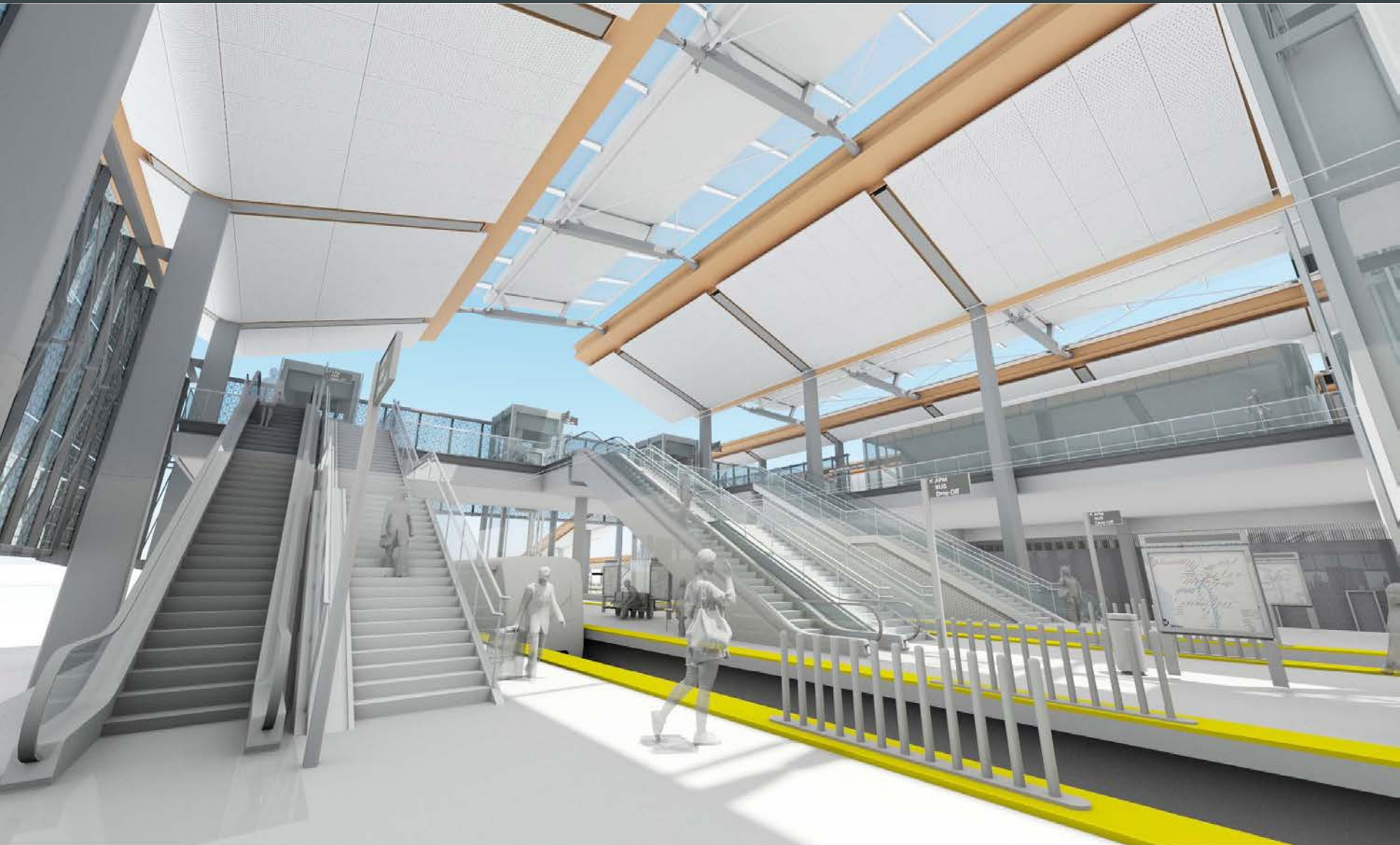


# Metro Hub: Mezzanine Level

Looking Southwest



# LRT Platforms



# Bus Plaza

Looking South





# Thank you

