

# Next stop: more rail.

## CRENSHAW/LAX TRANSIT PROJECT



Gateway LA Board of Directors Meeting

January 14, 2021 | 9 AM



# Project Overview

## Walsh Shea Corridor Constructors (WSSC)

Main Line & Stations Contractor

## Hensel Phelps Herzog (HPH)

Southwestern Maintenance Yard Contractor,  
Completed March 2019

- 8.5-mile light-rail servicing the Cities of Los Angeles, Inglewood and El Segundo
- 8 new stations:
  - 3 underground
  - 4 at-grade
  - 1 aerial
- Life of Project Budget: \$2.148 Billion



# Aviation/Century Station

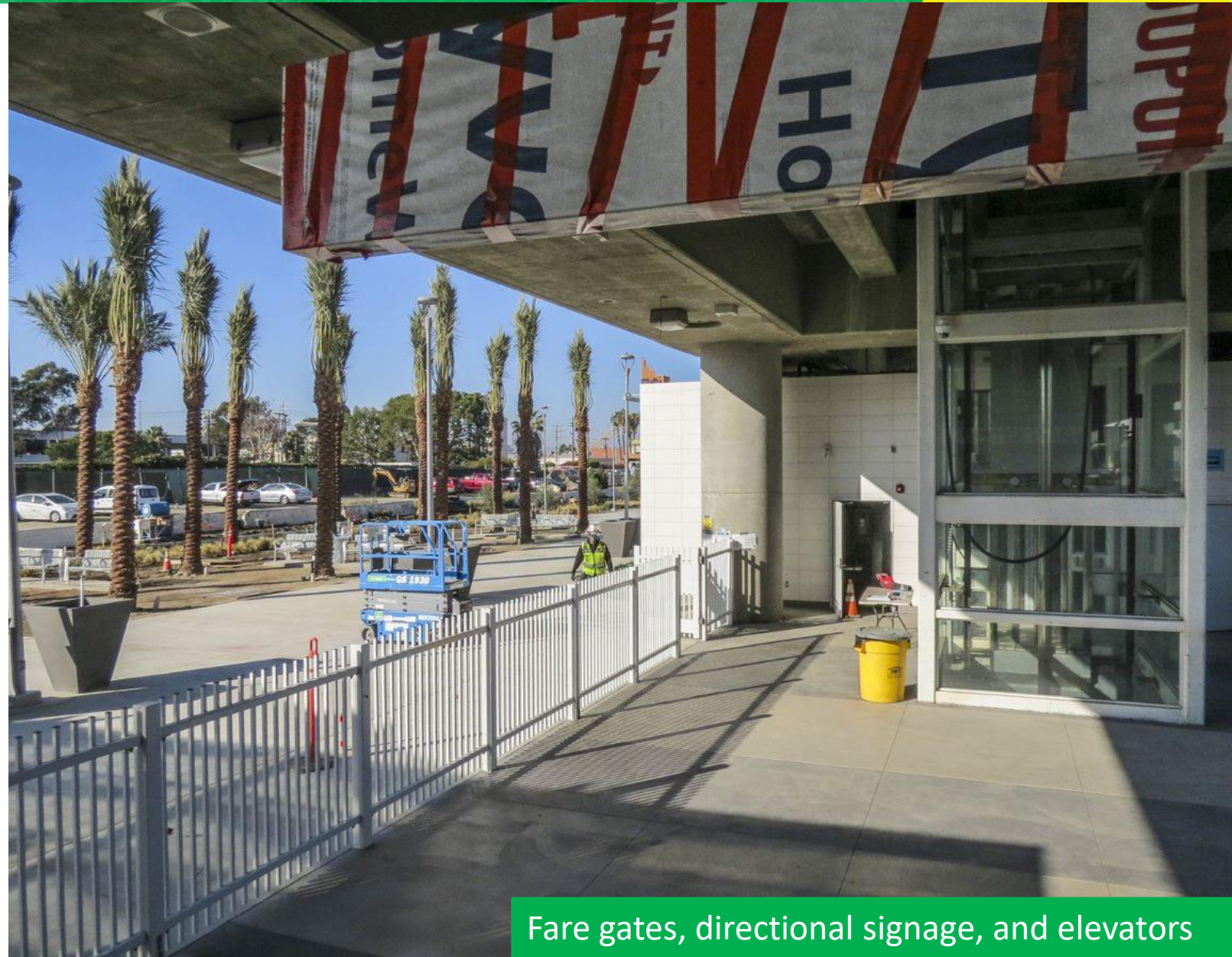


Station platform and canopies, Ticket Vending Machines, landscaping, pedestrian benches, steel bollards, and fare gate equipment

# Aviation/Century Station



Pedestrian benches and palm trees



Fare gates, directional signage, and elevators

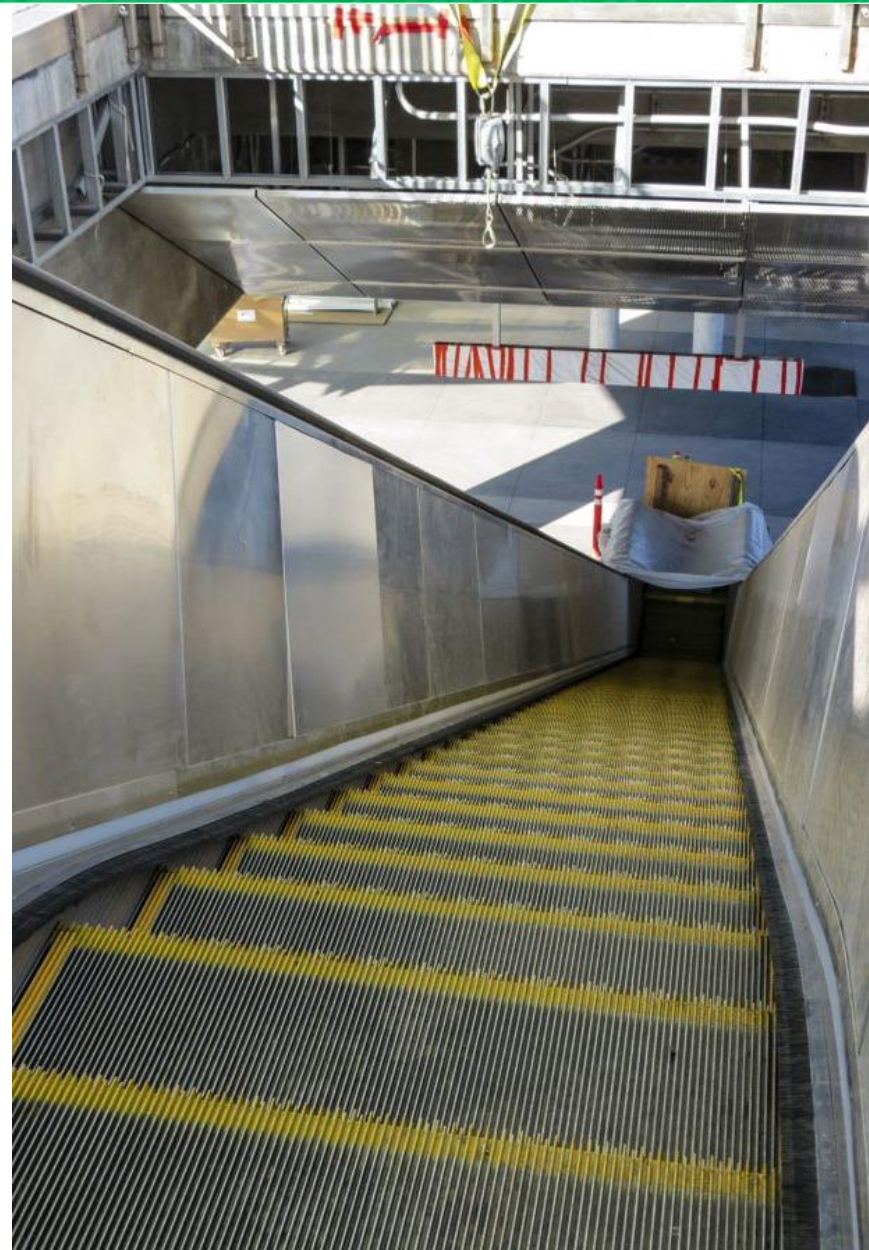
# Aviation/Century Station



Additional landscaping on station plaza



# Aviation/Century Station



Completed escalator, elevator, and staircase

# Aviation/Century Station



Directional signage, LED and LCD message boards, encased platform base, PA systems, and pedestrian benches



Blue emergency callbox on station platform installation

# Aviation/Century Station



Fence installation for emergency exit



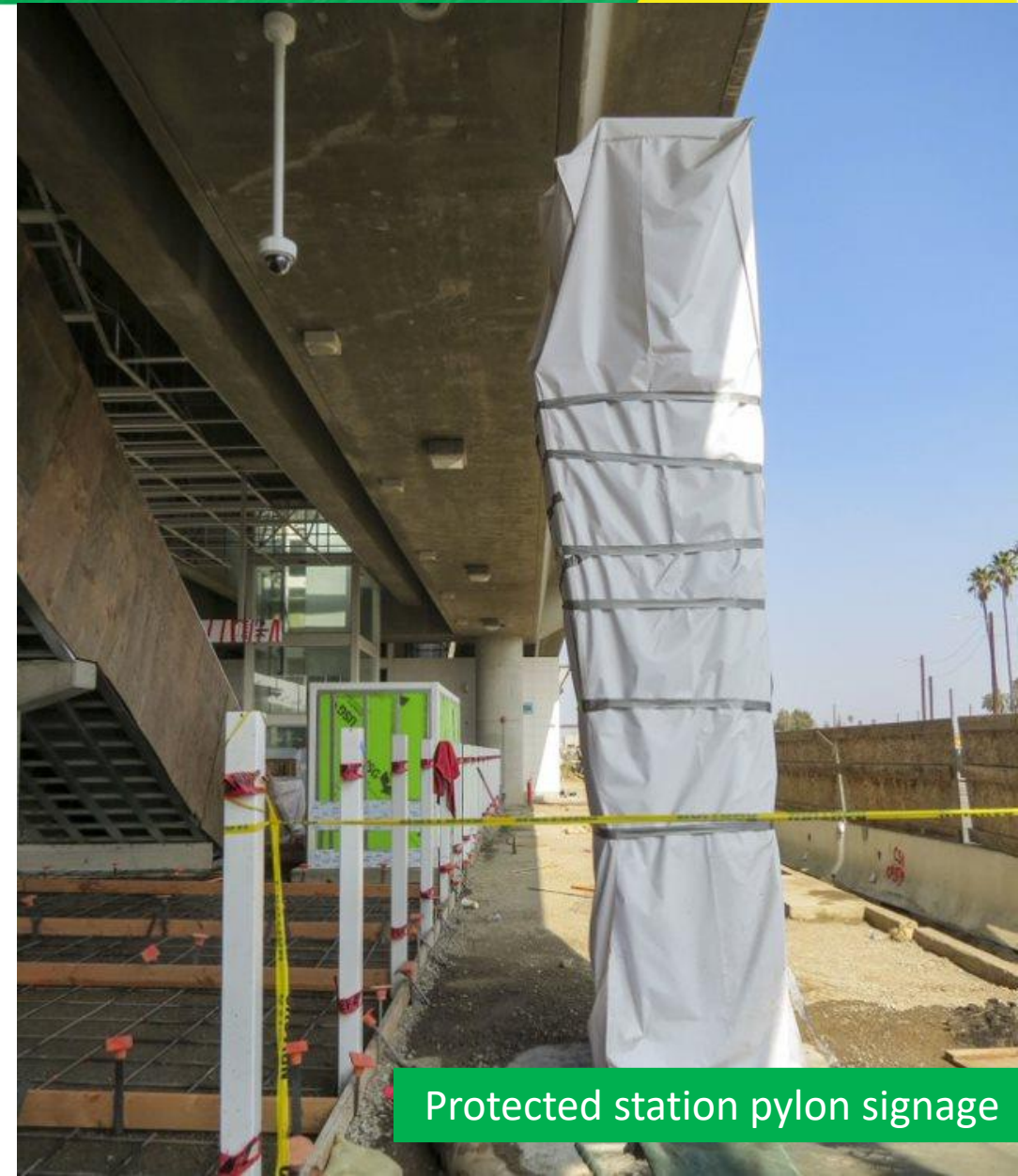
Remaining plaza to be paved



# Aviation/Century Station



Station plaza with pylon signage



Protected station pylon signage

# Aviation/Century Station Upcoming Construction

## Upcoming Construction Activities

- Install landscaping lighting
- Install station art fence
- Repave the Century Bl & Aviation Bl
- Complete traffic light installation at Century Bl & Aviation Bl
- Imperial Hwy between Aviation Bl and Hornet Wy Street Restoration



Installation of traffic lights at Aviation Bl and Century Bl

# Upcoming Crenshaw/LAX Transit Project Virtual Meeting



## January 2021 Construction Update Community Meeting

Thursday, January 28, 2021  
6-7:30PM

Our staff will highlight the project's major accomplishments over the past couple of months and an outlook on construction activities ahead. We will also have a presentation from Metro's NextGen team on bus changes implemented as of December 13, 2020 and what bus impacts will take place near the project alignment.

Zoom Link: <http://bit.ly/CLAXJanuary282021>

# STAY CONNECTED



213.922.2736



*crenshawcorridor@metro.net*



*metro.net/crenshaw*



*@crenshawrail*



*crenshawrail*